



THE TOUGHEST BASKETBALL SYSTEM ON THE PLANET.™

INTRODUCING THE **ALL-NEW**
GOALRILLA DC AND CV



IT TAKES MORE TO BE **HERE.**

DIRECT CONNECT TECHNOLOGY



All forces from the rim are transferred via a **DIRECT CONNECTION** to a **4" STEEL BEAM** – bypassing the backboard and its frame. It's Goalrilla tough – beyond the strength needed for the most brutal play.

The **GOALRILLA DC** can support **2,000 lbs. (1Ton)**

THAT'S 6 STAINLESS STEEL REFRIGERATORS.



FOUND EXCLUSIVELY ON THE NEW
Goalrilla DC

- Most adjustable basketball goals pivot where rim and backboard meet the backboard arms. This causes forces on the rim to be directly transferred to the backboard frame and glass.

- The Goalrilla DC eliminates this pivot point. And instead transfers all forces to a solid cage supported by double-welded crossbeams via a 4" steel beam.

INTRODUCING THE **ALL-NEW**

Goalrilla **DC**

A RESIDENTIAL SYSTEM. AN OUTDOOR INSTITUTIONAL SYSTEM.
EITHER WAY YOU LOOK AT IT - IT'S THE TOUGHEST GOALRILLA EVER BUILT.

DIRECT CONNECT

PATENT PENDING



Unlike other adjustable basketball goals, all forces are transferred via a **DIRECT CONNECTION** to a 4" steel beam - bypassing the backboard and its frame. It's Goalrilla tough - beyond the strength needed for the most brutal play.

READ MORE ABOUT
DIRECT CONNECT
TECHNOLOGY ON: **PAGE 1**



The DC72 features **DUAL WELDED TORSION BARS** on its lower board arms to prevent backboard sway.

DC72

72" x 42"
BACKBOARD SIZE

6" x 6"
POLE SIZE

1/2" THICK
TEMPERED GLASS
BACKBOARD

4' OVERHANG
WHEN HEIGHT IS
SET AT 10'



The DC60 features **A SINGLE WELDED TORSION BAR** on its lower board arms to prevent backboard sway.

DC60

60" x 38"
BACKBOARD SIZE

6" x 6"
POLE SIZE

1/2" THICK
TEMPERED GLASS
BACKBOARD

3' OVERHANG



RIM: Direct Connection to 4" steel beam.
Supports 2,000 lbs. (1 Ton) of vertical torque...
THAT'S 6 STAINLESS STEEL REFRIGERATORS.

1/2" THICK GLASS:
Delivers true arena rebound performance.

GOALRILLA DC INCLUDES:



SQUARE POLE PAD
WITH FLARED ANCHOR COVER



BACKBOARD PAD

INTRODUCING THE **ALL-NEW**

Goalrilla **CV**

CLEAR VIEW, CLEAN LINES.
AND A GOALRILLA BEAST THROUGH AND THROUGH.

HEAVY SPECS CLEAR VIEW

The **GOALRILLA CV** utilizes the proven design inspired by the E1 and integrates it into a smaller, ultra-tough system. The CV is capable of handling over **1000 lbs.** of vertical torque to the rim. The Goalrilla CV is built to take on anything the suburbs can throw at it. It's pure Goalrilla through and through.



CV60

60" x 38"
BACKBOARD SIZE

6" x 6"
POLE SIZE

3/8" THICK
TEMPERED GLASS
BACKBOARD

3' OVERHANG



CV54

54" x 38"
BACKBOARD SIZE

5" x 5"
POLE SIZE

3/8" THICK
TEMPERED GLASS
BACKBOARD

3' OVERHANG



CLEAR VIEW DESIGN:
Delivers more consistent rebound
across the entire board –
eliminating over-rebound.

GOALRILLA CV INCLUDES:



SQUARE POLE PAD
WITH FLARED ANCHOR COVER



BACKBOARD PAD

Goalrilla E1

IT'S THE GRAND DADDY. THE MOST UNOBSTRUCTED GOALRILLA BOARD.
IT CAN HANDLE ANYTHING THE SUBURBS THROW AT IT.

72 INCHES OF NCAA SPECS

The **GOALRILLA E1** – it's the pinnacle of North America's most sought after brand of residential basketball systems. It's 72" of NCAA specs – and nothing looks sweeter in the drive or on the home court. And, while the E1 looks great, the one mission of this goal is to handle anything the suburbs can throw at it. The E1 answers by handling over **1,200 lbs.** of vertical torque.



1/2" THICK GLASS:
Delivers true arena rebound performance.

GOALRILLA E1 INCLUDES:



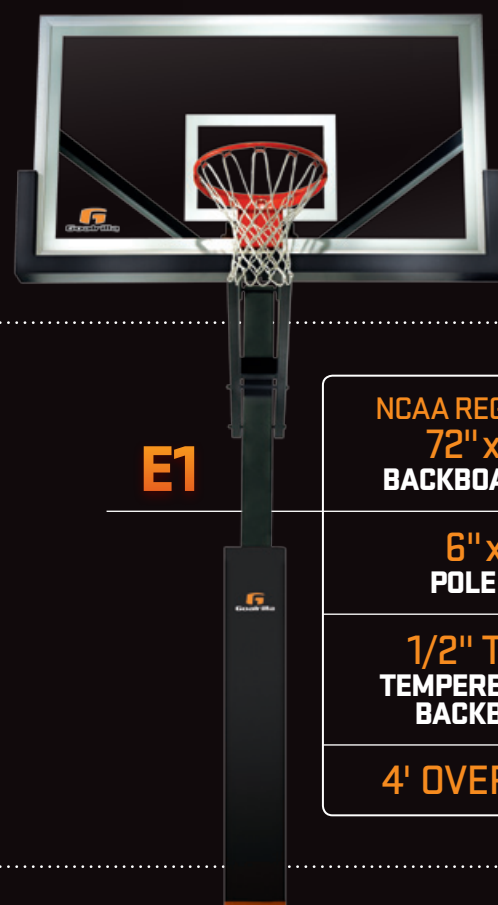
**ULTRA-THICK
POLE PAD**



**NCAA REGULATION
BACKBOARD PAD**



THE ENTIRE STARTING FIVE
(PLUS BENCH AND WATER COOLER - 1245 LBS.)



E1

**NCAA REGULATION
72" x 42"
BACKBOARD SIZE**

**6" x 8"
POLE SIZE**

**1/2" THICK
TEMPERED GLASS
BACKBOARD**

4' OVERHANG

THE REST OF THE TOUGHEST SYSTEMS ON THE PLANET.



 <p>COMPARED TO THE GS72 THE GS-I HAS:</p> <ul style="list-style-type: none">2" TALLER BACKBOARD1' GREATER OVERHANGTHICKER GAUGE POLE STEEL	 <p>COMPARED TO THE GS60 THE GS-II HAS:</p> <ul style="list-style-type: none">2" TALLER BACKBOARD6" GREATER OVERHANG.5" (WIDTH & DEPTH) LARGER POLETHICKER GAUGE POLE STEEL	 <p>COMPARED TO THE GS54 THE GS-III HAS:</p> <ul style="list-style-type: none">4" TALLER BACKBOARD6" GREATER OVERHANGTHICKER GAUGE POLE STEEL			
<p>GOALRILLA GS-I</p> <p>72" x 42" BACKBOARD SIZE</p> <p>6" x 6" POLE SIZE</p> <p>3/8" THICK TEMPERED GLASS BACKBOARD</p> <p>4' OVERHANG</p>	<p>GOALRILLA GS-II</p> <p>60" x 38" BACKBOARD SIZE</p> <p>6" x 6" POLE SIZE</p> <p>3/8" THICK TEMPERED GLASS BACKBOARD</p> <p>3' OVERHANG</p>	<p>GOALRILLA GS-III</p> <p>54" x 38" BACKBOARD SIZE</p> <p>5" x 5" POLE SIZE</p> <p>3/8" THICK TEMPERED GLASS BACKBOARD</p> <p>3' OVERHANG</p>	<p>GOALRILLA GS72</p> <p>72" x 40" BACKBOARD SIZE</p> <p>6" x 6" POLE SIZE</p> <p>3/8" THICK TEMPERED GLASS BACKBOARD</p> <p>3' OVERHANG</p>	<p>GOALRILLA GS60</p> <p>60" x 36" BACKBOARD SIZE</p> <p>5.5" x 5.5" POLE SIZE</p> <p>3/8" THICK TEMPERED GLASS BACKBOARD</p> <p>2.5' OVERHANG</p>	<p>GOALRILLA GS54</p> <p>54" x 34" BACKBOARD SIZE</p> <p>5" x 5" POLE SIZE</p> <p>3/8" THICK TEMPERED GLASS BACKBOARD</p> <p>2.5' OVERHANG</p>

IT TAKES MORE TO BE A GOALRILLA.

EVERY GOALRILLA SYSTEM:

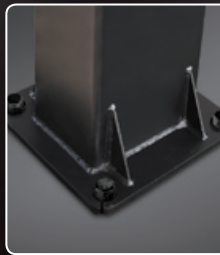
- **PLAYS LIKE AN ARENA SYSTEM**
- **WITHSTANDS THE ELEMENTS**
- **CAN BE RELOCATED TO A NEW HOME**

AND THIS IS HOW



TEMPERED GLASS BACKBOARD

- LIMITED LIFETIME WARRANTY
- FULL-PERIMETER ALL-STEEL SUPPORT FRAME PROVIDES MAXIMUM REBOUND SUPPORT
- RADIUS EDGE ALUMINUM FRAME PROTECTS GLASS BACKBOARD



ONE-PIECE STEEL POLE

- UNCOMPROMISED STRENGTH
- WELDED GUSSETS MAXIMIZE STABILITY AND ELIMINATE POLE FLEX AT BASE



WELDED, WIDE SPAN BOARD ARMS

- MITERED AND WELDED FOR SUPERIOR STRENGTH
- INCREASED SUPPORT TO BACKBOARD



PRE-ASSEMBLED PRO-STYLE FLEX RIM

- UV AND CORROSION RESISTANT
- NET INCLUDED



DUPONT POWDER COATED

- ULTIMATE UV & CORROSION RESISTANCE



DACROMET-COATED HARDWARE

- SUPERIOR CORROSION PROTECTION



ALL-STEEL, PRECISE HEIGHT ADJUSTMENT

- EASILY ADJUSTS GOAL HEIGHT FROM 7-1/2FT. TO 10FT.



ROCK-SOLID, ANCHOR BOLT MOUNTING SYSTEM

- ALLOWS FOR EASY LEVELING
- IF YOU MOVE TO A NEW HOME, YOUR SYSTEM CAN MOVE WITH YOU
- INCLUDES REBAR STEEL RODS TO STRENGTHEN CONCRETE

EVERY GOALRILLA SYSTEM INCLUDES A
LIMITED LIFETIME WARRANTY (INCLUDING GLASS)



1-888-USA-GOAL (888-872-4625)

GOALRILLA.COM



THE GOALRILLA™ STORY

- **Introduced in 1994**
- Consistent positioning message –
The Toughest Basketball System on the Planet
- Key innovations in product –
- Clear brand of choice among customers
- Brand oriented, family of products, simple/clean design

WHAT IT TAKES TO BE A GOALRILLA

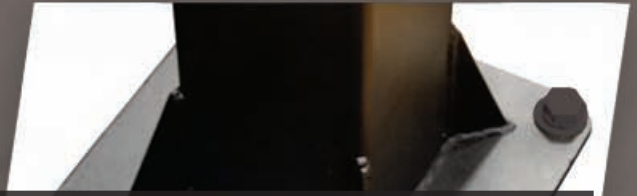


LIMITED LIFETIME WARRANTY
Backboard and Glass Included



TEMPERED GLASS BACKBOARD

- Tempered Glass Supported by Full - Perimeter Steel Frame
- Tempered Glass Meets ASTM F 1882 – 04 Standards
- Radius-Edge Aluminum Outer Frame



ONE-PIECE POLE, WELDED GUSSETS

- One-Piece for **Uncompromised Strength**
- Four Welded Gussets for Ultimate Stability



OFFICIAL FLEX RIM

- Powder-Coated Rim and Stainless Steel Components
- All-Weather Nylon Net



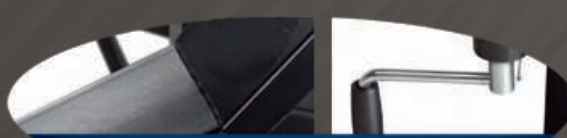
WELDED EXTENSION ARMS

- Mitered and Welded for Maximum Strength and Stability
- All Goalrilla Systems are Supported by Wide-Span Arms



ALL-STEEL ACTUATOR

- Durable all-steel construction
- Adjusts easily from 7.5' to 10' for players of all ages



DACROMET and POWDER-COATED METAL COMPONENTS

- Protects Components in ALL Climates



ANCHOR BOLT SYSTEM

- Rock-Solid, Yet Allows Relocation and Storage
- Simply Remove Hex Nuts for Easy Relocation of System

GoalrillaTM E1



IT TAKES MORE TO BE A

Goalrilla™



72" x 42" (1/2" THICK) TEMPERED GLASS BACKBOARD

- **MEETS NCAA SPECIFICATIONS**
- Tempered Glass Backboards are used in High School, College and Pro Programs
- Complies with ASTM Performance Standards
- Limited Lifetime Guarantee

DIRECT RIM-TO-ARM ATTACHMENT

WITHSTANDS OVER
1,000 LBS.
OF FORCE
ON THE RIM

WIDE SPAN ARMS

- Greater Rebound and Overall System Stability

MASSIVE 6" X 8" POLE

BACKBOARD PAD

- **MEETS NCAA SPECIFICATIONS**

ULTRA-THICK POLE PAD

THE TOUGHEST SYSTEM ON THE PLANET.™



GS-1

Backboard: Pole:

- **72" x 42"**
- 10mm Tempered Glass
- 1" x 2" Steel Internal Frame
- Radius Edge Aluminum Trim
- **6" x 6"**
- One-Piece
- Dupont® Powder Coated

Features		Benefits
POLE	• 6" x 6" One-Piece	<p>More rigid, less shake and uncompromised strength</p> <p>Minimizes pole flex at the base, creates durable anchor attachment and maximizes stability</p> <p>Allows for easy leveling / Allows customer to move system to a new location</p> <p>UV and Corrosion resistant</p>
	• 4 Welded Gussets	
	• Anchor Bolt System	
	• Dupont® Powder Coated	
BACK BOARD	• 72" x 42"	For consistent lively rebound
	• 10mm Tempered Glass	
HEIGHT ADJUST	• All-Steel Actuator	For Precise Height Adjustment Easily Adjusts Goal Height from 7.5' to 10' For Players of All Ages
FRAME	• Full Perimeter All-Steel Frame	Maximum rim support, rebound and safety
	• Radius Edge Aluminum Outer Frame	Added safety, protects glass edges and regulation look
ARMS	• Wide Span Board Arms	Backboard rigidity and consistent rebound
	• Mitered and Welded Extension Arms	Eliminates weak areas in arms vs. bent arms
	• 4' Overhang	Increased playing area under board
	• Dacromet Coated Hardware	Corrosion resistant that will protect in all climates
RIM	• 100% Powder Coated with Nylon Net	UV and corrosion resistant
	• Breakaway Heavy Flex	For Pro-Style play

- **Limited Lifetime Warranty**
Includes Glass



GS-II

Backboard:

Pole:

- 60" x 38"
- 10mm Tempered Glass
- 1" x 2" Steel Internal Frame
- Radius Edge Aluminum Trim

- 6" x 6"
- One-Piece
- Dupont® Powder Coated

Features

Benefits

POLE	<ul style="list-style-type: none"> • 6" x 6" One-Piece • 4 Welded Gussets • Anchor Bolt System • Dupont® Powder Coated 	<p>More rigid, less shake and uncompromised strength</p> <p>Minimizes pole flex at the base, creates durable anchor attachment and maximizes stability</p> <p>Allows for easy leveling / Allows customer to move system to a new location</p> <p>UV and Corrosion resistant</p>
BACK BOARD	<ul style="list-style-type: none"> • 60" x 38" • 10mm Tempered Glass 	<p>For consistent lively rebound</p>
HEIGHT ADJUST	<ul style="list-style-type: none"> • All-Steel Actuator 	<p>For Precise Height Adjustment</p> <p>Easily Adjusts Goal Height from 7.5' to 10' For Players of All Ages</p>
FRAME	<ul style="list-style-type: none"> • Full Perimeter All-Steel Frame • Radius Edge Aluminum Outer Frame 	<p>Maximum rim support, rebound and safety</p> <p>Added safety, protects glass edges and regulation look</p>
ARMS	<ul style="list-style-type: none"> • Wide Span Board Arms • Mitered and Welded Extension Arms • 3' Overhang • Dacromet Coated Hardware 	<p>Backboard rigidity and consistent rebound</p> <p>Eliminates weak areas in arms vs. bent arms</p> <p>Increased playing area under board</p> <p>Corrosion resistant that will protect in all climates</p>
RIM	<ul style="list-style-type: none"> • 100% Powder Coated with Nylon Net • Breakaway Heavy Flex 	<p>UV and corrosion resistant</p> <p>For Pro-Style play</p>

- **Limited Lifetime Warranty**
Includes Glass



GS-III

Backboard:

Pole:

- **54" x 38"**
- 10mm Tempered Glass
- 1" x 2" Steel Internal Frame
- Radius Edge Aluminum Trim

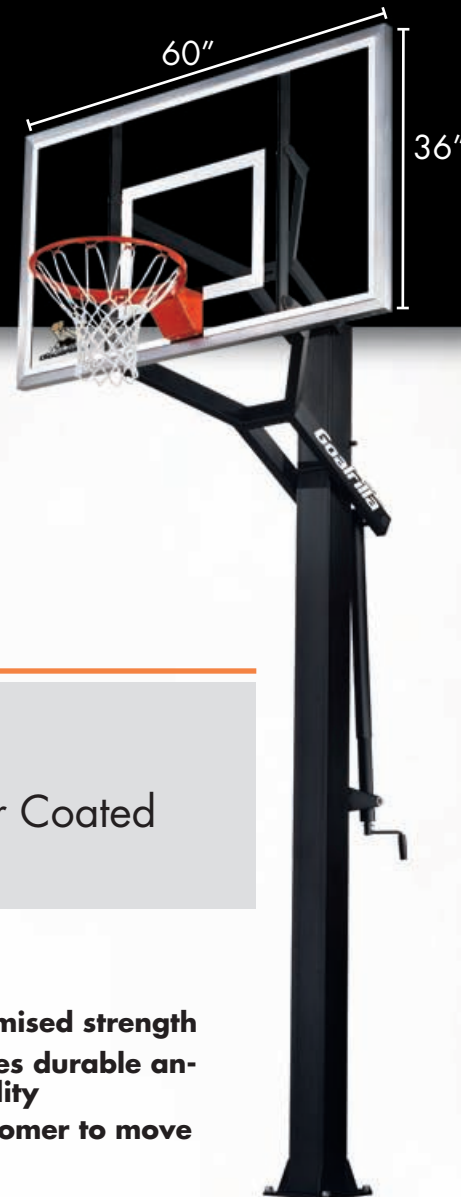
- **5" x 5"**
- One-Piece
- Dupont® Powder Coated

Features

Benefits

POLE	<ul style="list-style-type: none"> • 5" x 5" One-Piece • 4 Welded Gussets • Anchor Bolt System • Dupont® Powder Coated 	<p>More rigid, less shake and uncompromised strength</p> <p>Minimizes pole flex at the base, creates durable anchor attachment and maximizes stability</p> <p>Allows for easy leveling / Allows customer to move system to a new location</p> <p>UV and Corrosion resistant</p>
BACK BOARD	<ul style="list-style-type: none"> • 54" x 38" • 10mm Tempered Glass 	<p>For consistent lively rebound</p>
HEIGHT ADJUST	<ul style="list-style-type: none"> • All-Steel Actuator 	<p>For Precise Height Adjustment</p> <p>Easily Adjusts Goal Height from 7.5' to 10' For Players of All Ages</p>
FRAME	<ul style="list-style-type: none"> • Full Perimeter All-Steel Frame • Radius Edge Aluminum Outer Frame 	<p>Maximum rim support, rebound and safety</p> <p>Added safety, protects glass edges and regulation look</p>
ARMS	<ul style="list-style-type: none"> • Wide Span Board Arms • Mitered and Welded Extension Arms • 3' Overhang • Dacromet Coated Hardware 	<p>Backboard rigidity and consistent rebound</p> <p>Eliminates weak areas in arms vs. bent arms</p> <p>Increased playing area under board</p> <p>Corrosion resistant that will protect in all climates</p>
RIM	<ul style="list-style-type: none"> • 100% Powder Coated with Nylon Net • Breakaway Medium Flex 	<p>UV and corrosion resistant</p> <p>For Pro-Style play</p>

- **Limited Lifetime Warranty**
Includes Glass



GS60

Backboard:

Pole:

- 60" x 36"
- 10mm Tempered Glass
- 1" x 2" Steel Internal Frame
- Radius Edge Aluminum Trim

- 5.5" x 5.5"
- One-Piece
- Dupont® Powder Coated

Features

Benefits

POLE	<ul style="list-style-type: none"> • 5.5" x 5.5" One-Piece • 4 Welded Gussets • Anchor Bolt System • Dupont® Powder Coated 	<p>More rigid, less shake and uncompromised strength</p> <p>Minimizes pole flex at the base, creates durable anchor attachment and maximizes stability</p> <p>Allows for easy leveling / Allows customer to move system to a new location</p> <p>UV and Corrosion resistant</p>
BACK BOARD	<ul style="list-style-type: none"> • 60" x 36" • 10mm Tempered Glass 	<p>For consistent lively rebound</p>
HEIGHT ADJUST	<ul style="list-style-type: none"> • All-Steel Actuator 	<p>For Precise Height Adjustment</p> <p>Easily Adjusts Goal Height from 7.5' to 10' For Players of All Ages</p>
FRAME	<ul style="list-style-type: none"> • Full Perimeter All-Steel Frame • Radius Edge Aluminum Outer Frame 	<p>Maximum rim support, rebound and safety</p> <p>Added safety, protects glass edges and regulation look</p>
ARMS	<ul style="list-style-type: none"> • Wide Span Board Arms • Mitered and Welded Extension Arms • 2.5' Overhang • Dacromet Coated Hardware 	<p>Backboard rigidity and consistent rebound</p> <p>Eliminates weak areas in arms vs. bent arms</p> <p>Increased playing area under board</p> <p>Corrosion resistant that will protect in all climates</p>
RIM	<ul style="list-style-type: none"> • 100% Powder Coated with Nylon Net • Breakaway Medium Flex 	<p>UV and corrosion resistant</p> <p>For Pro-Style play</p>

- **Limited Lifetime Warranty**
Includes Glass



GS54

Backboard:

- 54" x 34"
- 10mm Tempered Glass
- 1" x 2" Steel Internal Frame
- Radius Edge Aluminum Trim

Pole:

- 5" x 5"
- One-Piece
- Dupont® Powder Coated

Features

Benefits

POLE

- 5" x 5" One-Piece
- 4 Welded Gussets
- Anchor Bolt System
- Dupont® Powder Coated

More rigid, less shake and uncompromised strength
Minimizes pole flex at the base, creates durable anchor attachment and maximizes stability
Allows for easy leveling / Allows customer to move system to a new location
UV and Corrosion resistant

BACK BOARD

- 54" x 34"
- 10mm Tempered Glass

For consistent lively rebound

HEIGHT ADJUST

- All-Steel Actuator

For Precise Height Adjustment
Easily Adjusts Goal Height from 7.5' to 10' For Players of All Ages

FRAME

- Full Perimeter All-Steel Frame
- Radius Edge Aluminum Outer Frame

Maximum rim support, rebound and safety
Added safety, protects glass edges and regulation look

ARMS

- Wide Span Board Arms
- Mitered and Welded Extension Arms
- 2.5' Overhang
- Dacromet Coated Hardware

Backboard rigidity and consistent rebound
Eliminates weak areas in arms vs. bent arms
Increased playing area under board
Corrosion resistant that will protect in all climates

RIM

- 100% Powder Coated with Nylon Net
- Breakaway Medium Flex

UV and corrosion resistant
For Pro-Style play

- **Limited Lifetime Warranty**
Includes Glass